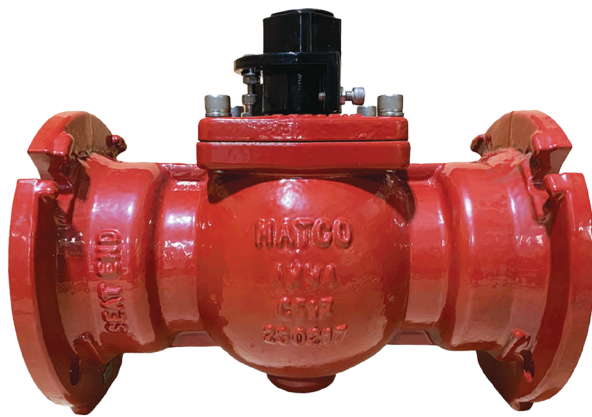


RESILIENT SEATED

PLUG VALVES - GATE VALVES - CHECK VALVES

Product Brochure



130W Eccentric Plug Valve - Flanged | Sizes 3" - 12"

FEATURES & BENEFITS

- Ductile Iron Flanged Eccentric Plug Valve
- 250 PSI
- AWWA C517
- Fusion Bonded Epoxy - AWWA C550
- Flanged Ends Conform with ASME B16.1
- EPDM Plug
- Horizontal or Vertical Installation

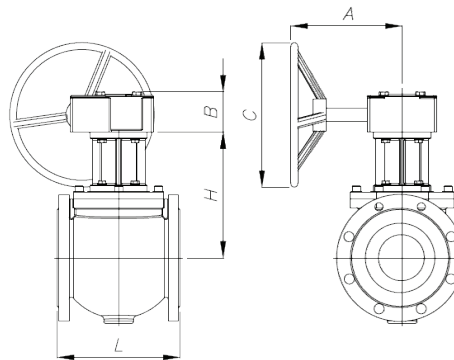
PLUG VALVES ARE IDEAL FOR HANDLING:

- Clean Liquids
- Dirty Liquids
- Sludge
- Slurries



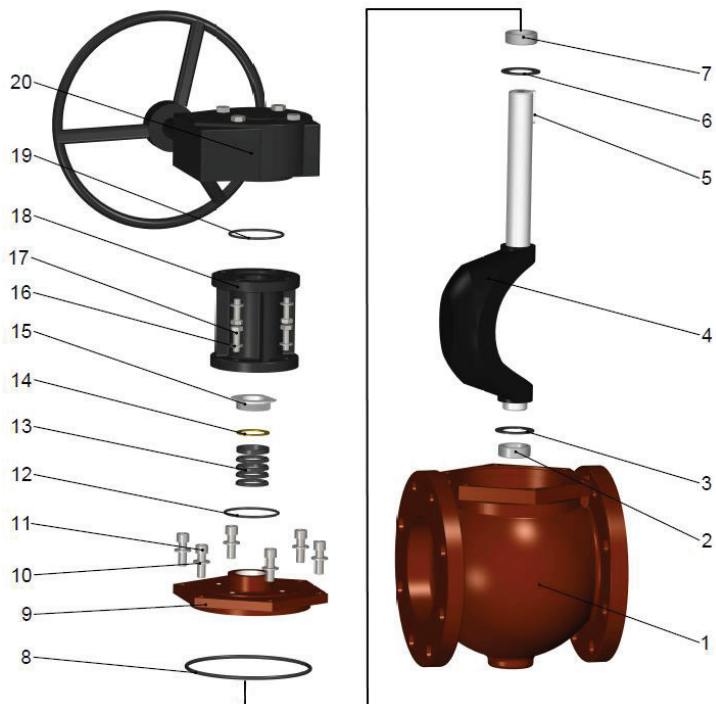
DIMENSIONS

Part # Handwheel	Part# OP Ntu	Size	L	H	A	B	C
130W10	130W10N	3"	8.0	7.2	6.2	3.1	7.5
130W11	130W11N	4"	9.0	7.9	6.2	3.1	7.5
130W13	130W13N	6"	10.5	10.8	8.9	3.4	11.9
130W14	130WG14N	8"	11.5	13.1	10.6	4.9	15.4
130W15	130WG15N	10"	13.0	17.4	12.1	4.7	17.5
130W16	130WG16N	12"	14.0	18.5	12.1	4.7	17.5



MATERIAL SPECIFICATIONS

No.	Part	Material
1	Body	Ductile Iron A536 Grade 65-45-12
2	Shaft Brushing	Stainless Steel A276 Type 316
3	Thrust Washer	PTFE
4	Plug	EPDM Encapsulated Ductile Iron
5	Key	Carbon Steel A29 1045
6	Thrust Washer	PTFE
7	Shaft Brushing	Stainless Steel A276 Type 316
8	Gasket	Rubber NBR D2000
9	Bonnet	Ductile Iron A536 Grade 65-45-12
10	Washer	Stainless Steel A276 Type 316
11	Bolt	Stainless Steel A276 Type 316
12	O-Ring	Rubber NBR D2000
13	V-Packing	Rubber NBR D2000
14	Washer	Brass B124 C37700
15	Packing Gland	Carbon Steel A29 1045
16	Washer	Stainless Steel A276 Type 316
17	Bolt	Stainless Steel A276 Type 316
18	Yoke	Ductile Iron A536 Grade 65-45-12
19	O-Ring	Rubber NBR D2000
20	Gear Box	Assembly



Sizes 3" - 12"

130M Eccentric Plug Valve Mechanical Joint

FEATURES & BENEFITS

- Ductile Iron Eccentric Plug Valve
- Mechanical Joint
- 250 PSI
- AWWA C517
- Fusion Bonded Epoxy - AWWA C550
- Mechanical joint Complies with AWWA/ANSI C153
- EPDM Plug
- Comes with 2" Op Nut

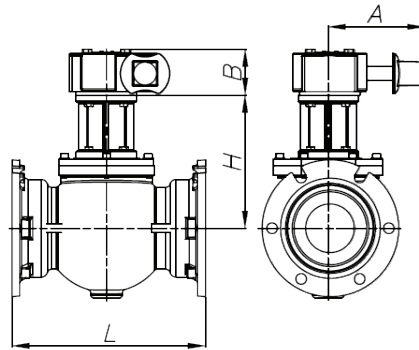
PLUG VALVES ARE IDEAL FOR HANDLING:

- Clean Liquids
- Dirty Liquids
- Sludge
- Slurries



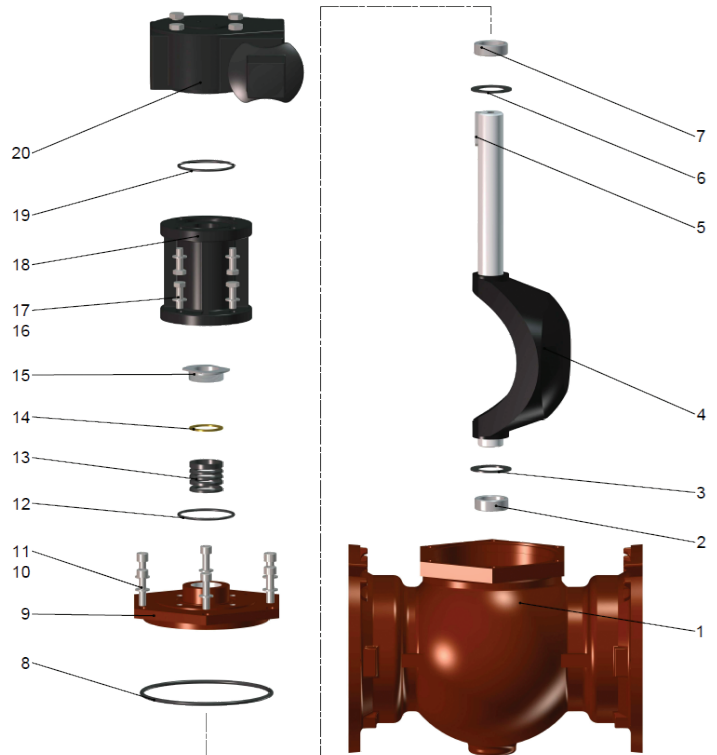
DIMENSIONS

Part #	Size	L	H	A	B
130M10	3"	11.5	7.2	6.1	3.1
130M11	4"	14.3	7.9	6.1	3.1
130M13	6"	15.7	10.8	8.8	3.4
130MG14	8"	17.4	13.1	10.4	4.9
130MG15	10"	19.4	17.4	11.7	4.7
130MG16	12"	20.7	18.5	11.7	4.7



MATERIAL SPECIFICATIONS

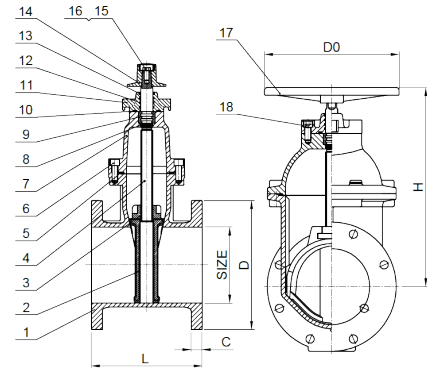
No.	Part	Material
1	Body	Ductile Iron A536 Grade 65-45-12
2	Shaft Brushing	Stainless Steel A276 Type 316
3	Thrust Washer	PTFE
4	Plug	EPDM Encapsulated Ductile Iron
5	Key	Carbon Steel A29 1045
6	Thrust Washer	PTFE
7	Shaft Brushing	Stainless Steel A276 Type 316
8	O-Ring	Rubber NBR D2000
9	Bonnet	Ductile Iron A536 Grade 65-45-12
10	Washer	Stainless Steel A276 Type 316
11	Bolt	Stainless Steel A276 Type 316
12	O-Ring	Rubber NBR D2000
13	V-Packing	Rubber NBR D2000
14	Washer	Brass B124 C37700
15	Packing Gland	Carbon Steel A29 1045
16	Washer	Stainless Steel A276 Type 316
17	Bolt	Stainless Steel A276 Type 316
18	Yoke	Ductile Iron A536 Grade 65-45-12
19	O-Ring	Rubber NBR D2000
20	Gear Box	Gray Cast Iron A126 Grade B



225W DI Flanged Gate Valve | Sizes 2" - 12"

FEATURES & BENEFITS

- Ductile Iron Flanged Gate Valve
- Resilient Wedge
- Non Rising Stem
- AWWA C515-15
- 300 PSI 2" - 12"
- 250 PSI 14" - 18"
- 200 PSI 20" - 24"
- AWWA C550 Epoxy
- UL Listed / FM Approved
- NSF-61 / NSF-372 verified by UL Water Quality
- Flanges Conform to ANSI B16.1
- Can Be Fitted With Post Indicator Plate
- Comes with Handwheel and Op Nut



DIMENSIONS

Part #	Size	L	D	G	H	D0	Bolt Circle	Qty. *Dia Bolt Circle
225W08	2"	7.0	6.0	0.62	9.5	7	4.75	4*0.75
225W09	2-1/2"	7.5	7.0	0.69	10.0	7	5.50	4*0.75
225W10	3"	8.0	7.5	0.75	11.0	10	6.25	4*0.75
225W11	4"	9.0	9.0	0.94	11.8	10	7.50	8*0.75
225W13	6"	10.5	11.0	1.00	16.4	12	9.50	8*0.88
225W14	8"	11.5	13.5	1.12	20.7	14	11.75	8*0.88
225W15	10"	13.0	16.0	1.19	24.5	16	14.00	12*1.0
225W16	12"	14.0	19.0	1.25	28.0	16	16.25	12*1.0

MATERIAL SPECIFICATIONS

No.	Part	Material	ASTM Spec.
1	Body	Ductile Iron	A536-65-45-12
2	Wedge	Ductile Iron EPDM Encapsulated	A536-65-45-12
3	Stem Nut	Bronze	ASTM C95200
4	Stem	Stainless Steel	ANSI 304
5	Gasket	Rubber	EPDM
6	Bolt	Stainless Steel	SS304
7	Bonnet	Ductile Iron	A536-65-45-12
8	O-Ring	Rubber	NBR
9	Thrust Collar	Bronze	ASTM C95200
10	O-Ring	Rubber	NBR
11	Gland	Ductile Iron	A536-65-45-12
12	O-Rings	Rubber	NBR
13	Dust Ring	Rubber	NBR
14	Operating Nut (optional)	Ductile Iron	A536-65-45-12
15	Bolts	Stainless Steel	SS304
16	Handwheel (optional)	Stainless Steel	SS304
17	Bolts	Ductile Iron	A536-65-45-12
18	Yoke	Stainless Steel	SS304



LEARN MORE



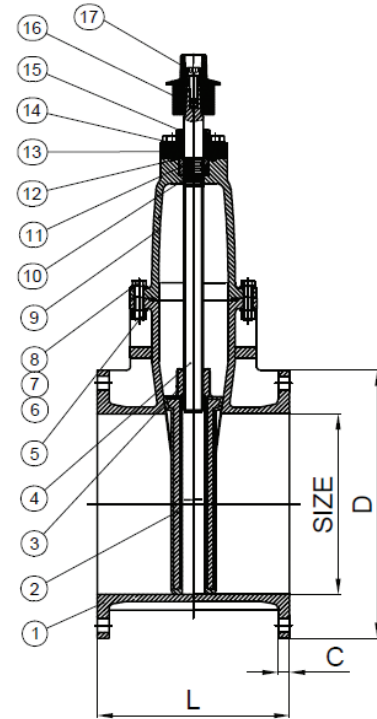
Sizes 14" - 24" | 225W DI Flanged Gate Valve

FEATURES & BENEFITS

- Ductile Iron Flanged Gate Valve
- Resilient Wedge
- Non Rising Stem
- AWWA C515-15
- 300 PSI 2" - 12"
- 250 PSI 14" - 18"
- 200 PSI 20" - 24"
- AWWA C550 Epoxy
- UL Listed / FM Approved
- NSF-61 / NSF-372 verified by UL Water Quality
- Flanges Conform to ANSI B16.1
- Comes with Handwheel and Op Nut

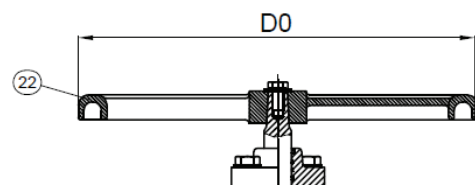
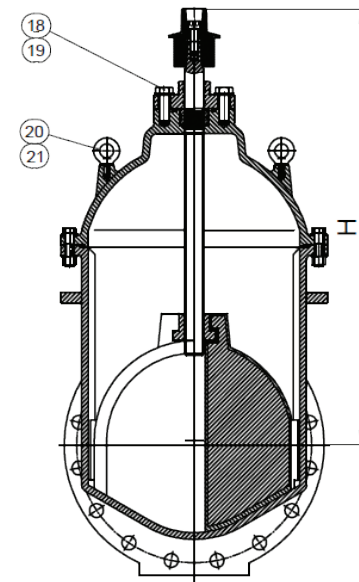
DIMENSIONS

Part #	Size	L	D	C	H	DO	Bolt Circle	Qty. *Dia Bolt Circle
225W17	14"	15.0	21.0	1.38	35.6	22.0	18.75	12*1.13
225W18	16"	16.0	23.5	1.44	38.5	22.0	21.25	16*1.13
225W19	18"	17.0	25.0	1.56	44.0	24.0	22.75	16*1.25
225W20	20"	18.0	27.5	1.69	47.0	24.0	25.00	20*1.25
225W24	24"	20.0	32.0	1.88	52.8	30.0	29.50	20*1.38



MATERIAL SPECIFICATIONS

No.	Part	Material	ASTM Spec.
1	Body	Ductile Iron	A536-65-45-12
2	Wedge	Ductile Iron EPDM Encapsulated	A536-65-45-12
3	Stem Nut	Bronze	ASTM C95200
4	Stem	Stainless Steel	AISI 431
5	Gasket	Rubber	EPDM
6	Bolt	Stainless Steel	SS304
7	Nuts	Stainless Steel	A2470
8	Washer	Stainless Steel	SS304
9	Bonnet	Ductile Iron	A536-65-45-12
10	O-Ring	Rubber	NBR
11	Thrust Washer	Bronze	ASTM C95200
12	O-Rings	Rubber	NBR
13	Gland	Ductile Iron	A536-65-45-12
14	O-Ring	Rubber	NBR
15	Dust Ring	Rubber	NBR
16	Operating Nut	Ductile Iron	A536-65-45-12
17	Bolt	Stainless Steel	SS304
18	Bolt	Stainless Steel	SS304
19	Washer	Stainless Steel	SS304
20	Lifting Bolt	Stainless Steel	SS304
21	Washer	Stainless Steel	SS304
22	Handwheel	Ductile Iron	A536-65-45-12



120W / WC Ductile Iron Swing Check Valve | Sizes 3" - 12"

FEATURES & BENEFITS

- Ductile Iron
- 300 PSI Non-Shock CWP
- Bolted Cover
- MSS SP 71 Compliant
- AWWA C508 Approved
- NSF/ANSI 61 & 372
- Fusion Bonded Epoxy Coating Inside & Outside – AWWA C550
- Outside Lever & Weight or Optional Spring Kit Available
- Flanged Ends Conform with ANSI B16.1
- For Horizontal Installation

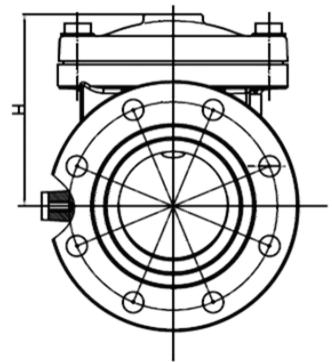
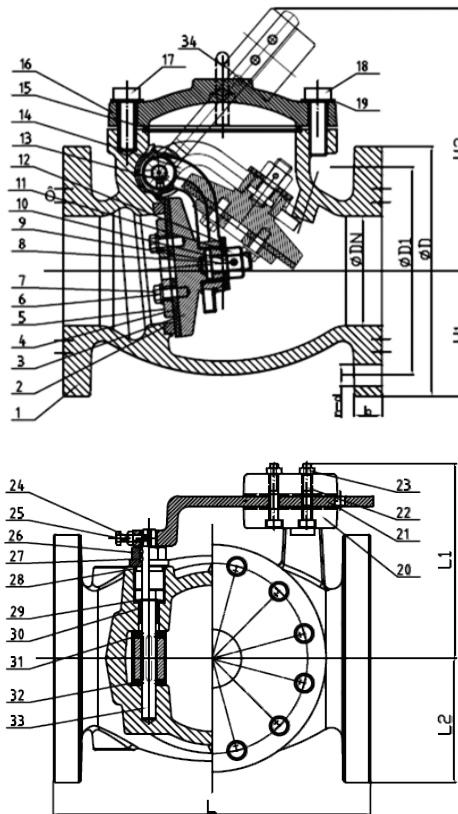


MATERIAL SPECIFICATIONS

No.	Part	Material
1	Valve Body	Ductile Iron 65-45-12
2	Seat	ASTM B148 C95400
3	Disc	Ductile Iron 65-45-12
4	Disc Seat Ring	NBR
5	Retainer Washer	Ductile Iron 65-45-12
6	Washer	AISI 304
7	Bolt	AISI 304
8	Stud	ASTM B148 C95400
9	Roll Pin	AISI 304
10	Roll Pin	AISI 304
11	Nut	ASTM B148 C95400
12	Washer	ASTM B148 C95400
13	Flat Key	AISI 304
14	Clapper Arm	Ductile Iron 65-45-12
15	O-Ring	NBR
16	Bonnet	Ductile Iron 65-45-12
17	Bolt	AISI 316
18	Bolt	AISI 316
19	Washer	AISI 316
20	Weight	Ductile Iron 65-45-12
21	Arm	Ductile Iron 65-45-12
22	Bolt	AISI 316
23	Nut	AISI 316
24	Nut	AISI 316
25	Bolt	AISI 316
26	Seat Nut	ASTM B148 C95400
27	O-Ring	NBR
28	Gasket	PTFE
29	Circlip	Carbon Steel
30	Shaft Sleeve Gland	ASTM B148 C95400
31	Washer	ASTM B148 C95400
32	Washer	ASTM B148 C95400
33	Hinge Pin	AISI 420
34	Eye Pin	Carbon Steel

APPLICATIONS

Wastewater & Sewage, Irrigation, Potable Water, Turf, Golf Course, Water Distribution



DIMENSIONS

Size	DN	L	D	D1	B	n-d	H	H1	H2	L1	L2
3"	3.15	9.49	7.87	6.00	0.75	4-0.75	6.81	3.94	8.72	6.53	3.94
4"	3.94	11.50	9.02	7.50	0.94	8-0.75	6.91	4.51	10.39	7.13	4.51
6"	5.91	14.02	11.22	9.51	1.00	8-0.87	9.35	5.61	12.33	8.83	5.61
8"	7.88	19.49	13.50	11.75	1.12	8-0.87	10.70	6.75	16.54	11.24	6.75
10"	9.85	24.49	15.98	14.25	1.20	12-1	12.83	7.99	22.53	13.5	7.99
12"	11.82	27.48	19.02	17.00	1.26	12-1	14.09	9.51	23.92	14.37	9.51



Sizes 14" & 16"

120WC Ductile Iron Swing Check Valve

FEATURES & BENEFITS

- Ductile Iron
- 300 PSI Non-Shock CWP
- Bolted Cover
- MSS SP 71 Compliant
- AWWA C508 Approved
- NSF/ANSI 61 & 372
- Fusion Bonded Epoxy Coating Inside & Outside – AWWA C550
- Outside Lever & Weight or Optional Spring Kit Available
- Flanged Ends Conform with ANSI B16.1
- For Horizontal Installation

APPLICATIONS

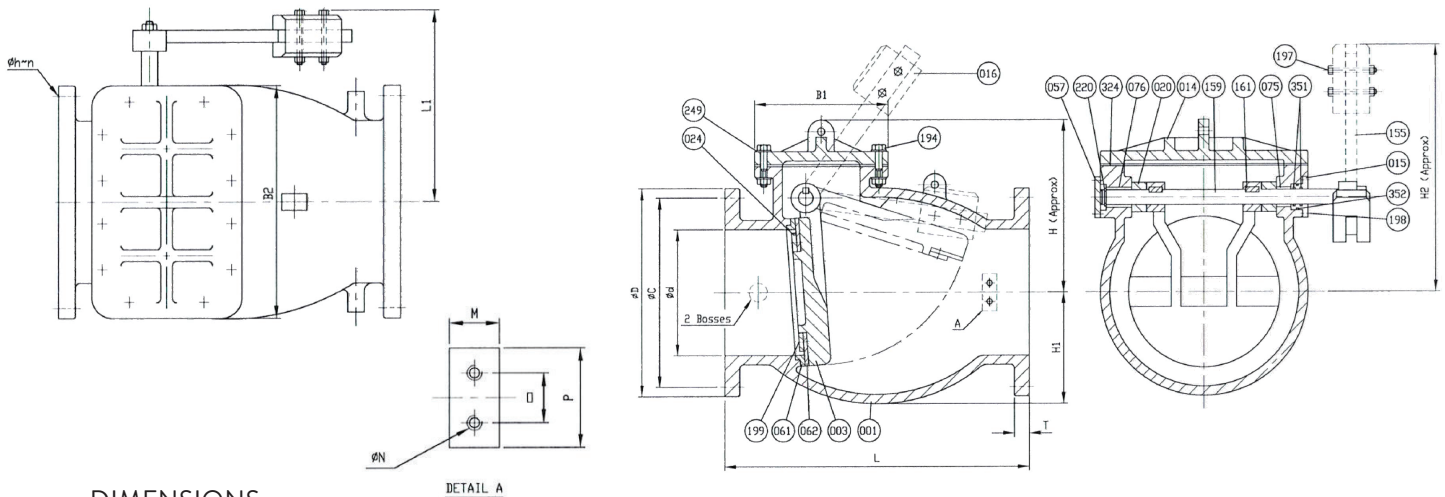
Wastewater & Sewage, Irrigation, Potable Water, Turf, Golf Course, Water Distribution



MATERIAL SPECIFICATIONS

No.	Part	Material	ASTM Designation
001	Body	Cast Iron	A 126 Class B
003	Disc	Ductile Iron	A 536 Gr. 64-45-12
014	Cover	Cast Iron	A 126 Class B
015	End Plate (A)	Bronze	B 62
016	Weight	Cast Iron	A 126 Class B
020	Sleeve	Cast Iron	A 126 Class B
024	Seat Holder	Ductile Iron	A 536 Gr. 64-45-12
057	End Plate (B)	Cast Iron	A 126 Class B
061	Body Seat Ring	Stainless Steel	A 276 Type 304
062	Disc Seat Ring	Rubber (BUNA-N)	D 2000 bk 707
075	Bushing (A)	Bronze	B 62
076	Bushing (B)	Bronze	B 62

No.	Part	Material	ASTM Designation
155	Weight Arm	Zinc Coated Steel	A 36
159	Hinge Pin	Stainless Steel	A 276 Type 304
161	Key	Stainless Steel	A 276 Type 304
194	Cover Bolt & Nut	Zinc Coated Steel	A 307 Grade B
197	Weight Bolt & Nut	Zinc Coated Steel	A 307 Grade B
198	End Plate Bolt	Zinc Coated Steel	A 307 Grade B
199	Seat Holder Bolt	Stainless Steel	A 276 Type 304
220	Snap Ring	Stainless Steel	-----
249	Washer	Zinc Coated Steel	A 36
324	Cover Gasket	Rubber (BUNA-N)	D 2000 BK 707
351	O-Ring B	Rubber (BUNA-N)	D 2000 BK 707
352	O-Ring C	Rubber (BUNA-N)	D 2000 BK 707



DIMENSIONS

Size Ød	L	ØD	ØC	Øh	n	T	B1	B2	H	H1	H2	L1	M	N	O	P
14"	31	21	18-3/4	1-1/8	12	1-3/8	13-3/16	22-3/16	18-1/8	10-13/16	30	17-1/2	2	3/4 X 10TPI(UNC)	2-3/8	3-15/16
16"	36	23-1/2	21-1/4	1-1/8	16	1-7/16	14-5/8	24-1/8	20-3/4	12-7/8	38-11/16	19-5/16	2	3/4 X 10TPI(UNC)	2-3/8	3-15/16



mail@matco-norca.com
www.MATCO-NORCA.com



Global sourcing. National compliance. Local service.

CALIFORNIA

5595 Fresca Dr.,
La Palma, CA 90623
Toll Free: 866-532-8306
Fax: 866-532-8307

TEXAS

1150 Silber Rd.,
Houston TX 77055
Toll Free: 800-935-5456
Fax: 713-680-2999

ILLINOIS

278 Windy Point Dr.,
Glendale Heights, IL 60139
Toll Free: 844-412-5068
Fax: 800-640-2252

GEORGIA

113 Industrial Blvd.,
Americus, GA 31709
Toll Free: 800-433-7526
Fax: 800-533-5134

NEW YORK

PO Box 27, R.22,
Brewster NY 10509
Toll Free: 800-431-2082
Fax: 845-278-9056